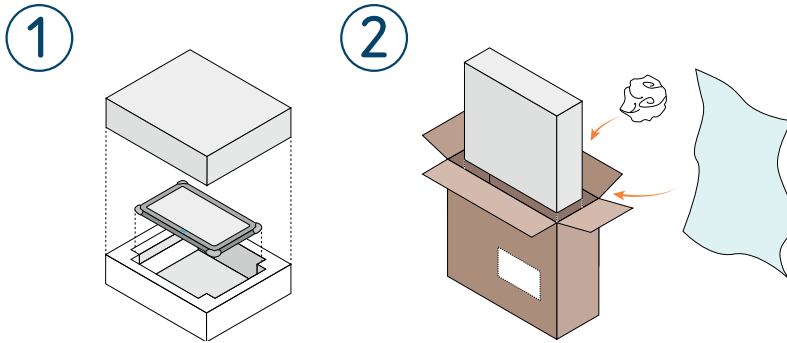


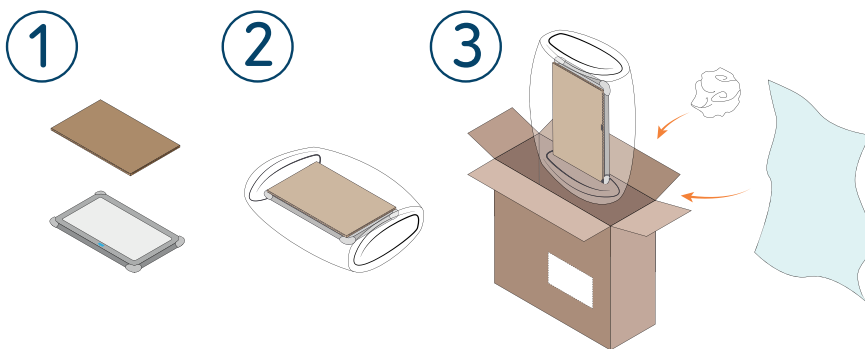
# Returning your device to us United Kingdom

If you have the original box:



1. Place your device, along with any power leads and cables back into the original box.
2. Pack the box into a second box, with soft packaging (eg. crumpled paper, bubble wrap, polystyrene chips) to prevent movement.

If you do not have the original box:



1. Cover your device's screen with a protective layer e.g. cardboard.
2. Wrap your device with soft packing, e.g. bubble wrap. A total thickness of 2 inches is recommended.
3. Pack your wrapped device into a mailing box with soft packaging surrounding to prevent movement.

Once packed, cut out and affix the label below to your box. Write the RMA number in the box provided. If you are reusing a box, please remove any old shipping labels. Your device is now ready for collection. Any questions or queries please contact us: **01684 578868 / repairs@thinksmartbox.com**

# Smartbox

## Smartbox Repairs

Ysobel House  
Enigma Commercial Centre  
Sandys Road  
Malvern  
WR14 1JJ

RMA Number:

thinksmartbox.com | repairs@thinksmartbox.com | 01684 578868

thinksmartbox.com

email repairs@thinksmartbox.com  
tel 01684 578868  
fax 01684 897753

