

Smartbox

Lesson 2.6

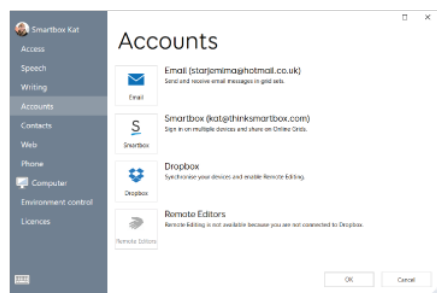
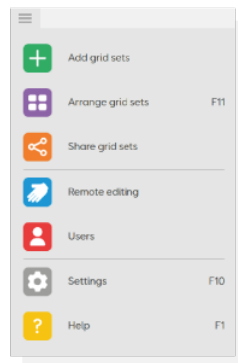
Setting up a Smartbox account for Grid

A Smartbox account enables certain features to be used in Grid. You can enable Remote editing, back up your user files to Dropbox, back up files from message banking and share grid sets to online grids.

Remote editing

To enable others to edit your grids remotely, you will need to sign in to both a Smartbox account and a Dropbox account, as well as setting up another Smartbox account for Remote Editing (see Lesson 2.8 – Remote Editing)

From the top menu, select **Settings > Accounts**



Select the Smartbox icon.

For an existing account:

Enter the email address and password associated with your Smartbox account to sign in

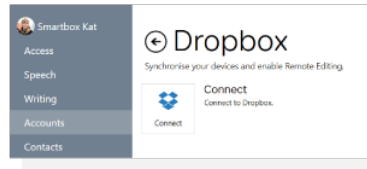
To create a Smartbox account:

Enter an email address for contact then create and confirm your password. You will need to agree to our **Terms of use** and **Privacy Policy** (you will be offered links to read them as you go through this process) and then select **Create Account**.

Linking a Dropbox account to Grid

Dropbox is a free service which allows you to store your files online and keep them in sync across devices. Grid uses Dropbox to allow **Remote Editing**.

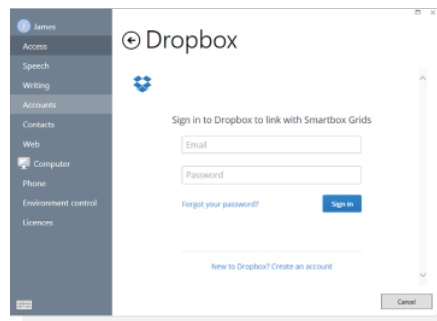
In Account Settings, select **Dropbox > Connect**.



For an existing account:

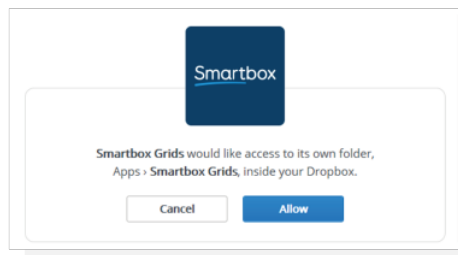
Sign in with your email address and password.

To create a Dropbox account:



Select the link to **Create an account** with Dropbox.

Grid will need access to its own folder within Dropbox - this is where grid sets will be stored for Remote editing. Select **Allow**.



When the setup is complete, you are ready to share your grid sets and the grid sets are ready to be edited remotely.