

Smartbox

Lesson 1.3

Editing a picture

Why edit a picture?

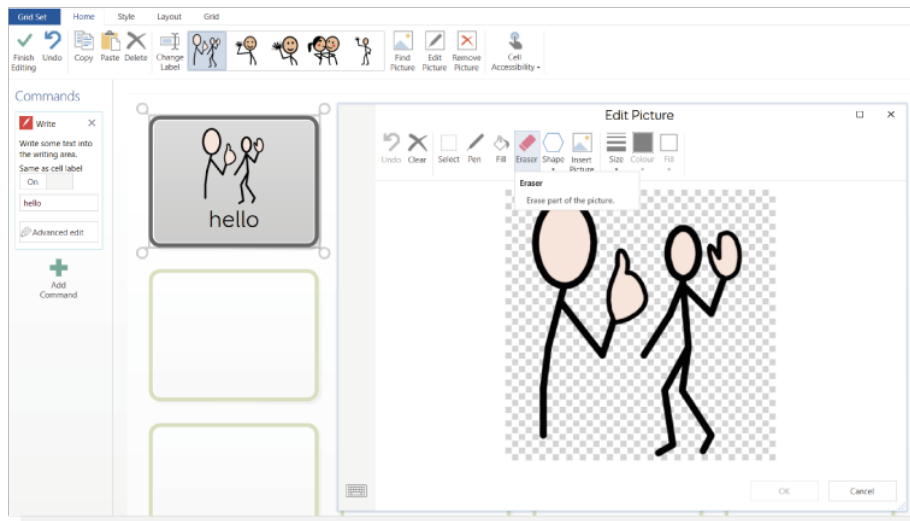
In Grid you can make cells with more than one image. You change colours, add shapes, draw freehand or erase sections of an image.

Editing a picture

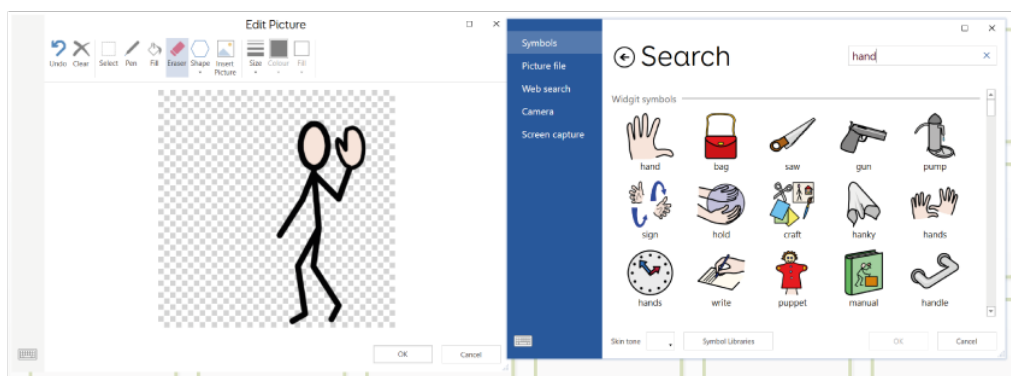
Go to Edit mode by pressing F11 or using the drop down menu in the top left and selecting Edit Grid.

Select the cell you want to edit. Select **Edit Picture** or select it from the top menu or **Right click** on the cell.

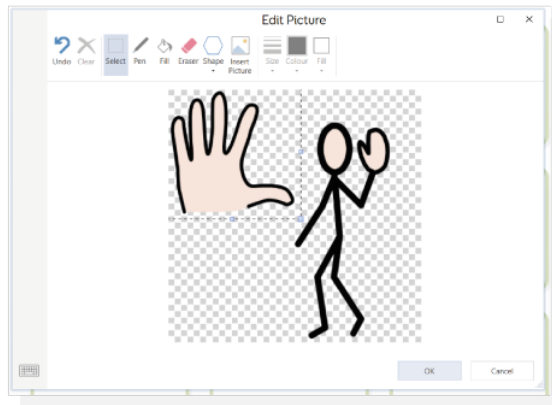
To remove part of the image, select **Erase**.



To add a second image, in **Edit Picture**, select **Insert Picture**.



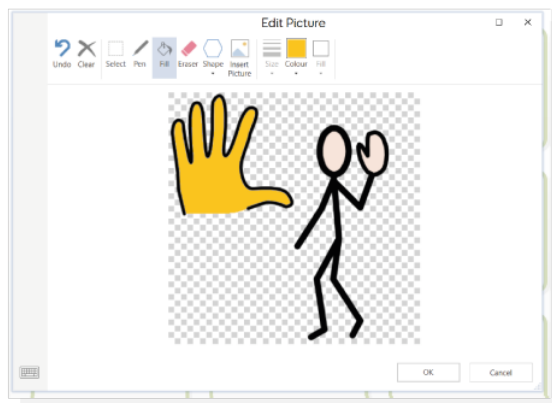
Using the image search you can choose to add a **Symbol**, a **Picture file**, and image from **Web search**, **Camera** or **Screen capture**.



The Select tool allows you to drag to resize the image.

Click and drag to move the images around.

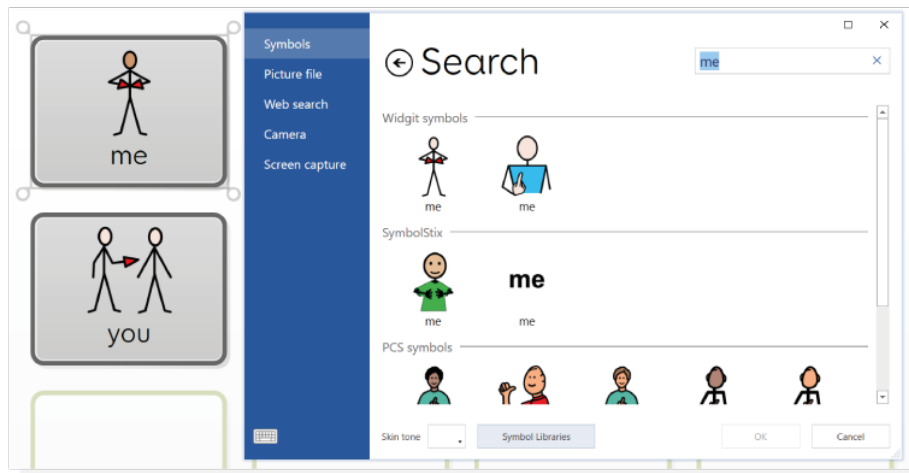
Using Fill, you can change the colour of areas of the image.



In this editor you can also add shapes, draw freehand, or erase sections of the picture. When your amends are done, click **OK** to save.



Tip: If you want to change skin tone for a single symbol in a grid set, you will need to use the Picture Editor.



Skin tone can be selected from the drop down menu on the bottom left.

If you want to change the skin tone default for the entire grid set, select **Settings** (either by selecting from the top menu or pressing F10).

Select **Writing > Symbols**.

Pick the required skin tone from the drop down menu and click **OK** to apply.

