

Smartbox

Lesson 2.1

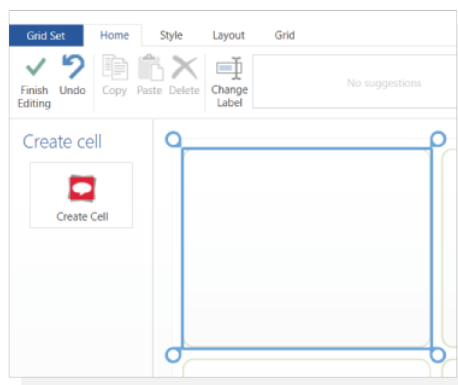
Commands in Grid

Commands are the action cells that can be activated by the user. Cell functions don't need to be restricted to just one, we will show you how to add a sequence of commands to a cell which can perform a chain of tasks.

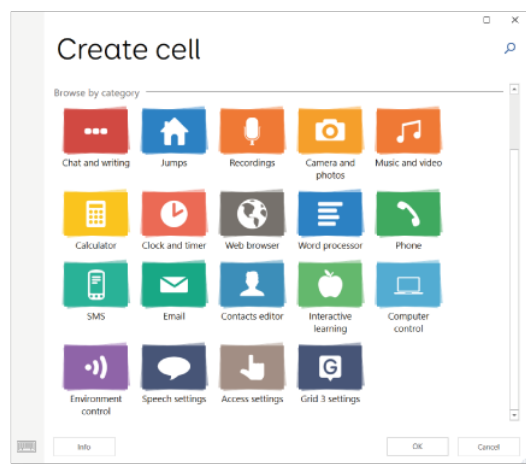
To create a command cell

Go to **Edit mode** by pressing **F11** or using the drop-down menu in the top left and selecting **Edit Grid**.

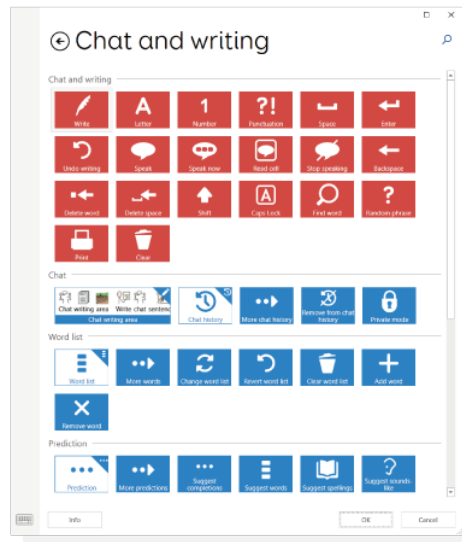
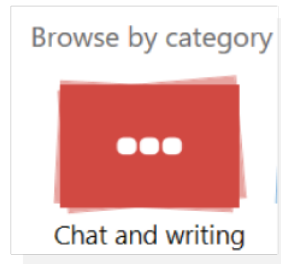
Select **Create Cell** from the left of the screen.



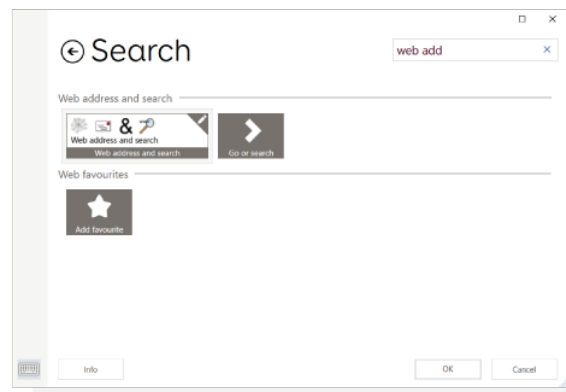
Commands are grouped together in Grid, with similar functions kept together to help you find what you are looking for.



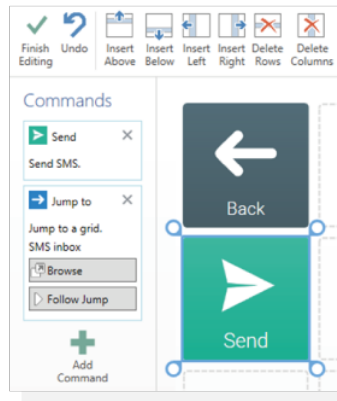
Select a **Category** (in this visual example, we have chosen **Chat and Writing**) and then select **Next** to view the commands available.



Tip: If you aren't sure which category your command might come under, you can use the search function.



You can add more than one command to a cell by selecting Add Command from the left of the screen.



Moving a command

The order in which the commands are carried out can be changed by moving the commands position in the list (which you will find to the left-hand side of the screen.) You can use the cursor/ mouse to click and drag the command either up or down the list

A command can be deleted by clicking on the X in the top right.

Tip: you can add commands to the grid which will be the first thing that happens every time the grid is opened. This command will activate on opening Grid.