

Smartbox

Lesson 2.7

Sharing grid sets and Online Grids

Grid sets can be moved and shared between devices and users.

Using Grid for iPad

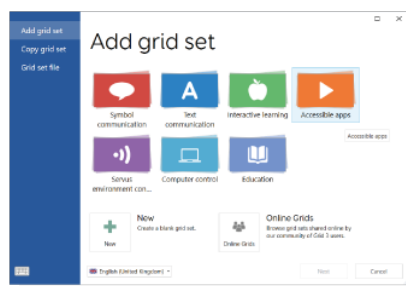
When you use your Smartbox Account and Dropbox in Grid for iPad, your grid sets will automatically be synced. You can edit and update your grid sets in either app and your changes will be reflected in both places.

Online grids

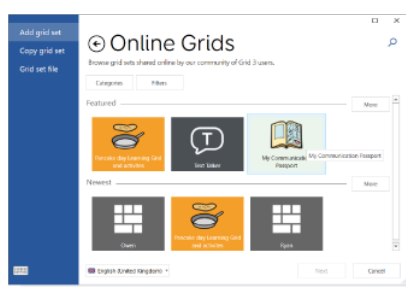
With your Smartbox Account, you can share a grid sets and add grid sets from within the Smartbox Community using Online Grids.

To add a grid set

In Grid Explorer, select **Menu > Add**



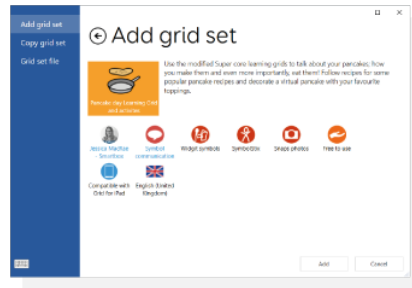
Select **Online Grids**.



Tip: The **Featured** category hosts popular and topical grid sets

To add a grid set, click on the icon, Select **Next**.

You will be show a brief description of the grid set, the content and grid type.



Select **Add** and it will be added to Grid Explorer.

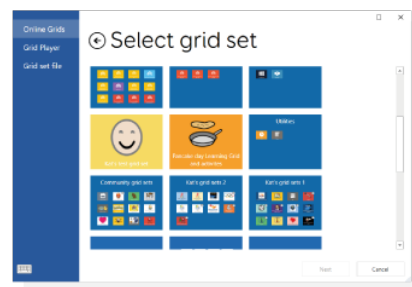
To share a grid set

Grid sets are valuable resources. If you have created one because you need it or it is useful, it's likely someone else will find it useful too! It is also a really handy way to share resources for teaching and assessments.

In Grid Explorer, select **Menu > Share grid sets**

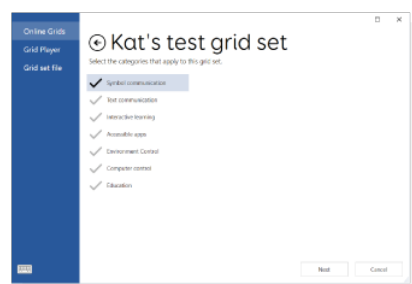


The grid sets displayed are ones that have been previously shared to **Online Grids**. To add more, select **Add**.

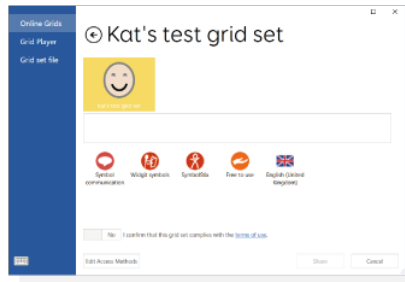


Select the grid set you would like to share.

Select **Next**.



Select the category under which the grid set will be stored. Select **Next**



Add a description. Select **Next** and the grid set will be shared to Online Grids.

Note: Grid sets that are uploaded to Online Grids can always be updated and removed at a later date.