

Smartbox

Lesson 3.1

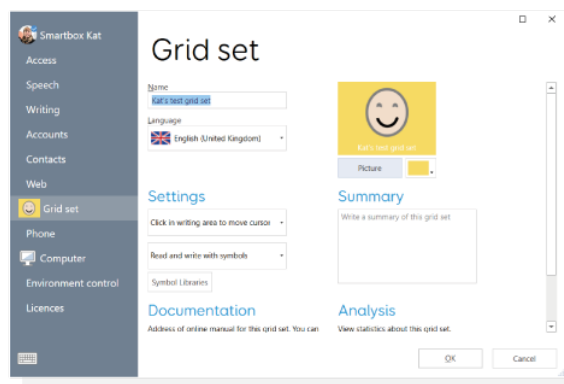
Grid set settings

This lesson walks you through how to change the settings on a grid set. Change the Grid set name, icon, description and settings.

Editing settings

Open a grid set. Select Menu from the top of the page.

Select Settings > Grid set (You can also use F10 to access Settings)



Settings

Name

This is the name that will be displayed in Grid explorer and what will be visible if and when the grid set is shared at any time

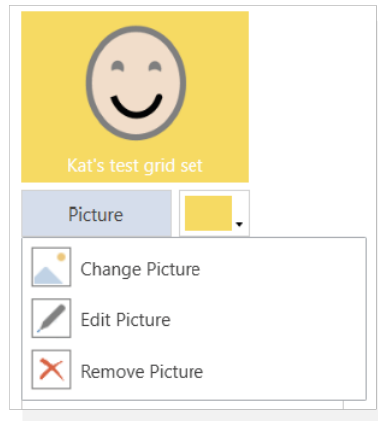
Language

Select the default language for the grid set



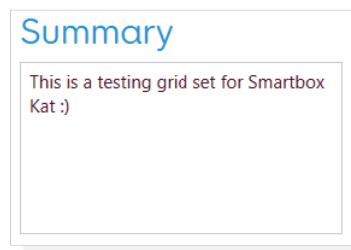
Picture

Editing this changes the cell icon as it appears in grid explorer



Summary

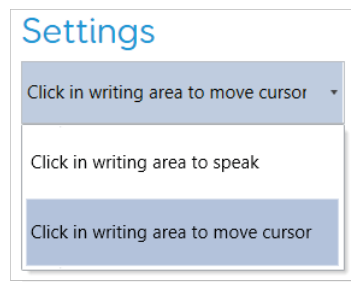
This is a brief description of the grid set and its intended use



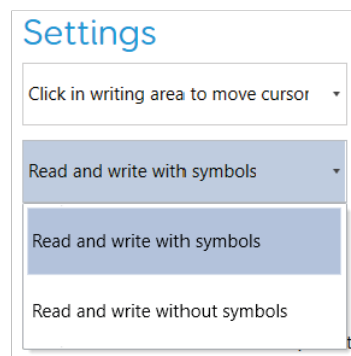
Settings

- Choose what will happen in the writing area when the cell is selected, either:

- Speak text
- Move cursor



- Choose whether symbol appear in the text writing area



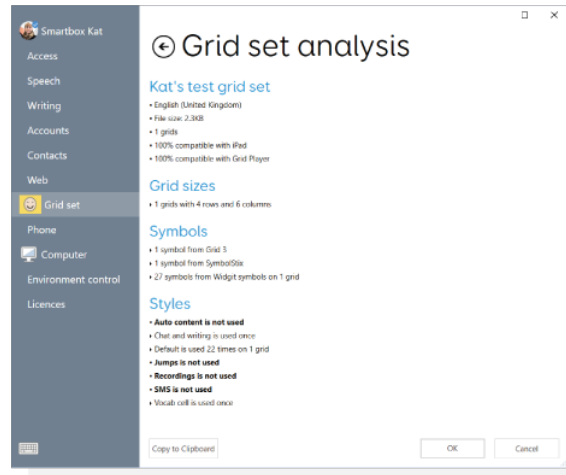
Here you can also select the Symbol library (s) for the grid set.

Documentation

All available resources for the grid set can be linked here by URL.

Tip: Grid set manuals can be accessed from the Menu when the grid is in use

Grid set analysis



Each grid set has a store of detailed information that can be accessed and reported on at any time. This tool is useful for checking consistency regarding grid size, symbol sets and styles.

Summary (shown under the grid set name)

This shows general information including the grid set name, number of grids and the language used.

Incompatibility issues will also be recorded here e.g. if the grid set will not work in Grid for iPad.

Grid sizes

Check whether grid sizes are consistent across the grid set. This is a useful tool when using or creating grid sets to use alongside key guards.

Symbols

This information is useful to ensure the symbol set is consistent throughout the grid set.

Styles

This shows any information on any styles that are applied throughout the grid set.